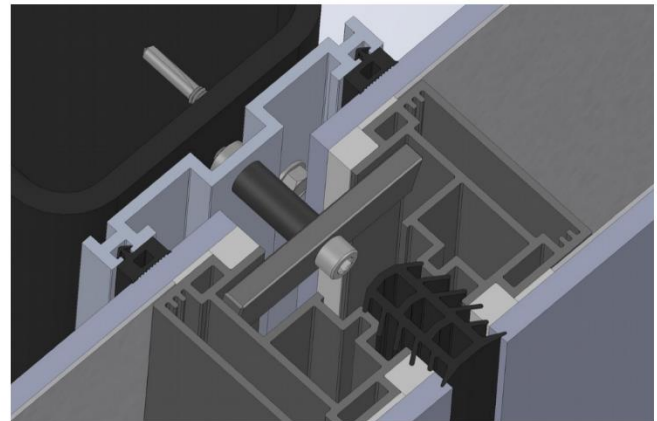
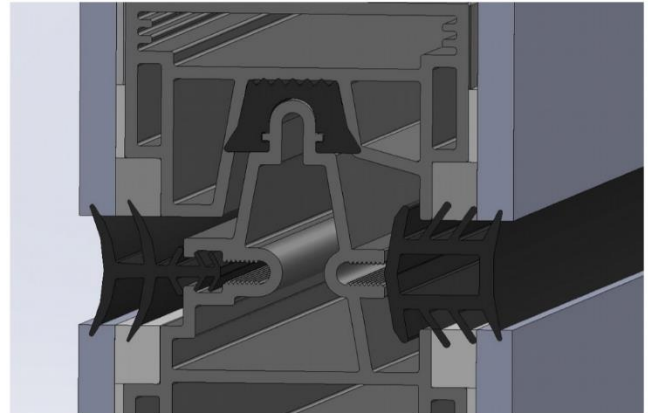




PRODUCT INFORMATION

SoleraWall® is a unique innovation, creating walls of highly insulated, light diffusing glass wall panels. These panels have the same properties as existing Solera R5 to R18 insulated glass units, but are self-supporting and frame-less. The support is provided by the internal spacer. These panels are designed to be attached directly to the primary structure of the building, no secondary support required.

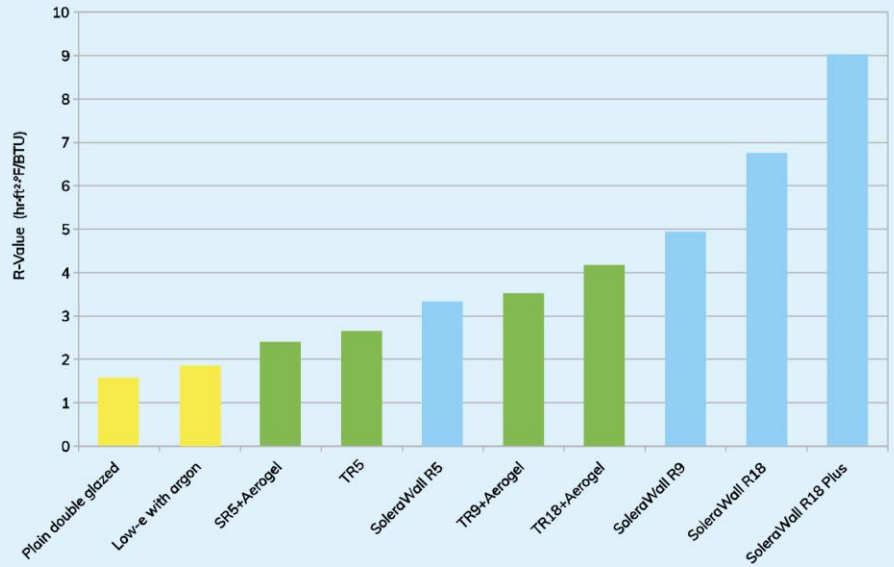
They can be stacked one on top of the other and side by side without visible fasteners or capping. The result is an innovative fenestration system with significantly improved thermal performance, maximum control of illumination potential and reduced solar heat gain. All at a lower installed cost than traditional captured systems such as curtain wall, window wall or storefront.



Nominal Thickness	3" (76mm)*
Visual Light Transmittance (VLT)	7%- 55%*
Shading Coefficient	0.08-0.61*
Solar Heat Gain Coefficient (SHGC)	0.07-0.51*
Centre of glass U-Value	0.2-0.055 (Btu/hr · ft ² · °F) 0.31-1.14 (W/m ² · K)
Centre of glass R-Value	5-18 (hr · ft ² · °F/BTU)
Total System U-Value	0.3 -0.11 (Btu/hr · ft ² · °F) 0.64-1.70 (W/m ² · K)
Total System R-Value	3.3-9 (hr · ft ² · °F/BTU)
Sound Transmittance Class (STC)	may exceed 52
*Subject to glass, insulating core and veil combination. Standard panel size 8'x3' (2440mm x 915mm)	

Experience Daylighting Done Well

Total System Comparison IGUs in Conventional Framing and SoleraWall®



ADVANCED
GLAZINGS

www.advancedglazings.com